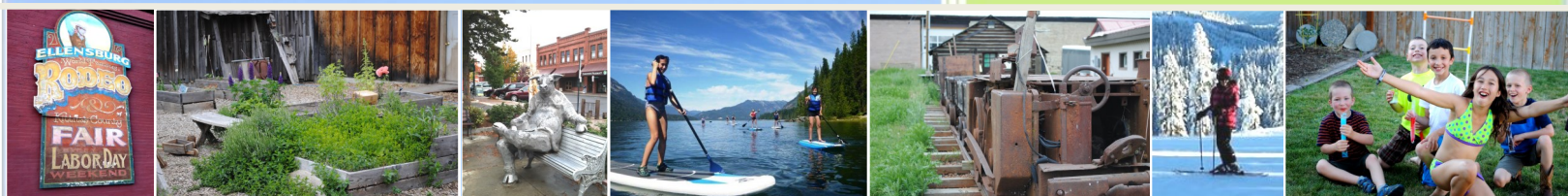


Kittitas County
Public Health
Department

*Protecting and promoting the health and the environment
of the people of Kittitas County*



2016 Annual Report

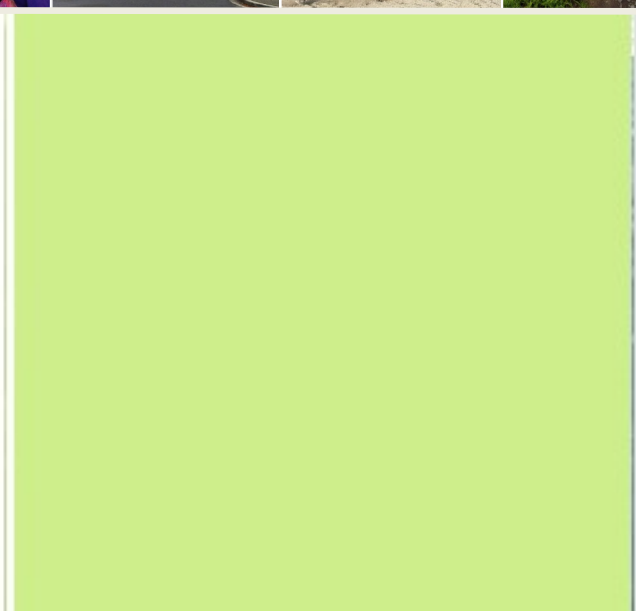
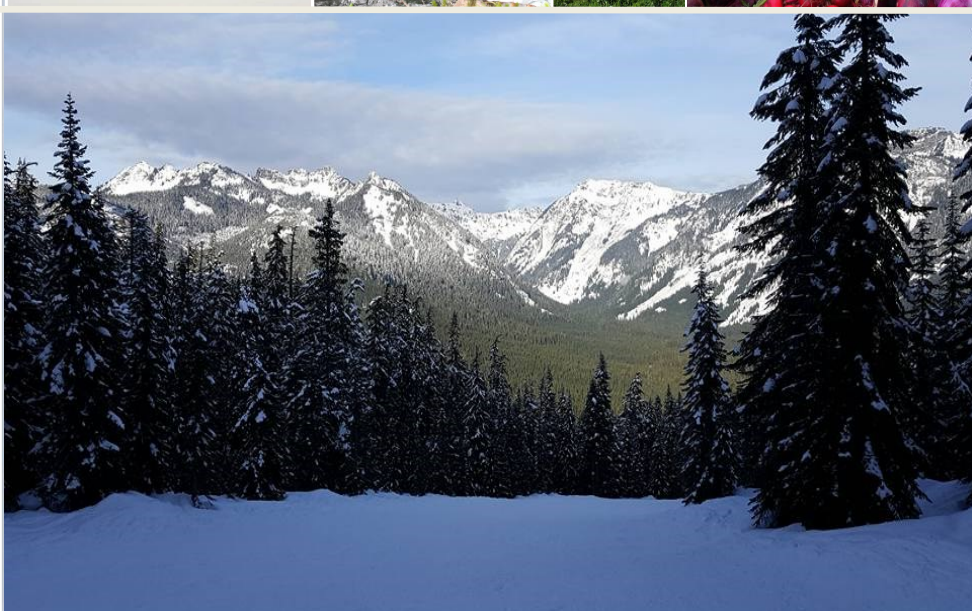
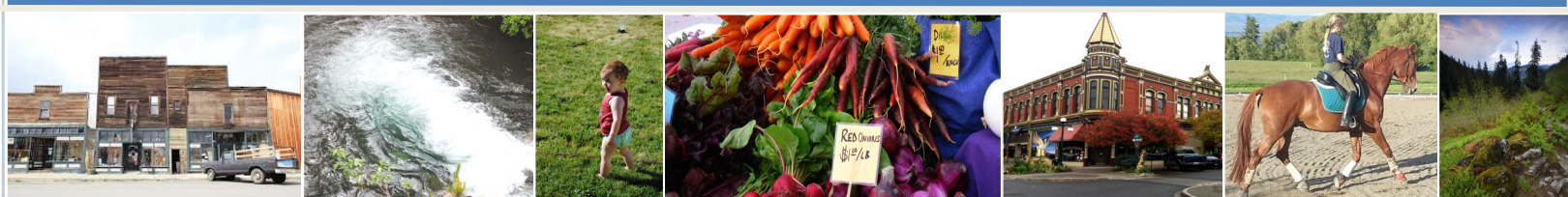




Table of Contents

Letter from the Administration.....	3
KCPHD Organization Chart.....	4
BOHAC Recognizes Public Health Champion.....	5
Board of Health Year in Review.....	6
2016: Top Stories for KCPHD.....	8
KCPHD Annual Program Data.....	10

Report Created by Kasey Knutson , Health Promotion Program Supervisor and Amy Fuller, Assessment Coordinator for KPCHD.



Letter from the Administration

Many of our family, friends, and neighbors are unsure about the role public health plays in our county; nonetheless public health services are essential. Public Health is Essential! The Kittitas County Public Health Department (KCPHD) provides crucial services to Kittitas County in order to keep the public healthy and safe from the spread of disease. KCPHD’s job is to track, prevent, and respond to food and water contamination, and disease outbreaks in our county, as well as many other services to promote a healthy community.

The Washington State Secretary of Health, Dr. John Wiesman, recently launched the “Public Health is Essential” campaign. It is a state-wide effort to provide information about what is at stake for public health and these vital services state-wide and locally. Complex threats and an expected population increase to another two million residents within ten years in Washington State, strains the provision of these core services. In the next twenty years, Kittitas County is projected to increase to another twenty thousand residents. The intent is to refocus efforts and close gaps in order to keep our communities safe from the spread of disease. As part of the campaign, the state legislature is being asked to provide \$50 million for local health departments during the next biennium.

KCPHD provides a range of services. We permit and inspect food establishments. We respond to environmental health complaints. For example, locally, KCPHD has permitted and inspected 338 permanent food establishments, responded to and resolved, 93 environmental health related complaints, and investigated 270 reports of communicable diseases in 2016. KCPHD has 17.9 full time employees with a 2016 budget of \$1,636,971.00 to provide essential services to 43,710 Kittitas County residents (Office of Financial Management).

With additional funding, KCPHD would be able to better respond to sexually transmitted disease reports and new and emerging health issues like vaping and affordable housing. We would provide increased support for partners including more support for local health care providers and taking vaccination efforts out into the community. And, lastly, we could address community specific health concerns from participation in local planning efforts to healthy homes and community resiliency.

Robin Read, MPH
Public Health Administrator



Mark Larson, MD
Health Officer

2016 KCPHD Organization Chart



The Kittitas County Board of Health Advisory Committee Recognizes Public Health Champions

In 2014, the Kittitas County Board of Health Advisory Committee (BOHAC) began sponsoring the annual Kittitas County Public Health Champion award. The award recognizes anyone that has made important contributions to the health of Kittitas County. The annual award is made possible by a generous donation from former Kittitas County Health Officer, Dr. Jim Gale.

To date, BOHAC has recognized Ellensburg Parks and Recreation (2015) and Dr. Paul Schmitt (2016) for their contributions to our county.



2016 Public Health Champion Award. BOHAC Members pictured from left to right: Carin Thomas, Dr. Paul Schmitt, Teague McKamey, Andrew Lyons, Hartwig Vatheuer

Board of Health 2016 Year in Review

Per public health accreditation standards, the Kittitas County Public Health Department (KCPHD) must document that we have consistently reviewed the governing entity's patterns of issues discussed and opinions of the governing entity members as well as positions taken. In order to meet this standard, KCPHD will be reviewing Board of Health (BOH) meetings to create a document with all motions addressed during the year, including positions taken by each BOH member. Motions made for meeting minute approval and meeting adjournment have been omitted from the review.

On the opposite page is a table of meeting dates, issues discussed, as well as voting positions. Highlights for 2016 include code change (amendment to chapter 8.24) and the approval of the Public Health is Essential resolution.

2016 Board of Health Members

Obie O'Brien,
Commissioner



Paul Jewell,
Commissioner



Gary Berndt,
Retired Commissioner



Laura Osiadacz, Commissioner



Deputy Chief Rich Elliott



Dr. John Asriel



2016 Annual Report

		<i>Commissioner O'Brien</i>	<i>Commissioner Jewell</i>	<i>Commissioner Berndt</i>	<i>Commissioner Osiadacz</i>	<i>Dr. John Asriel</i>	<i>Deputy Chief Elliott</i>
Date	Issues Discussed	Position Taken					
1.21.16	To approve amendment to ordinance 8.24	Approve	Absent	Absent	Not in office	Approve	Approve
3.17.16	To approve joint public hearing to consider 8.24 ordinance change	Absent	Approve	Approve	Not in office	Approve	Absent
4.21.16	To recommend Rich Elliott remain as Vice Chair, Board of Health	Absent	Approve	Not in office	Approve	Approve	Approve
6.16.16	To approve joint hearing to consider amendment to ordinance 8.24	Approve	Absent	Not in office	Approve	Absent	Approve
7.13.16	To approve resolution for adopting Emergency Operations Plan	Approve	Absent	Not in office	Approve	Absent	Approve
8.18.16	To approve amendment to chapter 8.24 of Kittitas County Code	Approve	Approve	Not in office	Approve	Approve	Absent
8.18.16	Motion to reappoint Rich Elliott to another BOH term	Approve	Approve	Not in office	Approve	Approve	Absent
9.15.16	To approve BOH signature on BOHAC letters of member recognition	Approve	Approve	Not in office	Approve	Approve	Approve
11.22.16	To approve Joint public hearing to consider 2017 Public Health Fee schedule	Approve	Approve	Not in office	Approve	Absent	Approve
11.22.16	To approve office closures Dec 16 and Jan 27	Approve	Approve	Not in office	Approve	Absent	Approve
12.15.16	Approve resolution Public Health is Essential with suggested amendments	Absent	Approve	Not in office	Approve	Approve	Absent
12.15.16 Continued	Adopt 2017 Fee Schedule with amendments	Absent	Approve	Not in office	Approve	Approve	Absent

2016 Year in Review: Top Stories for KCPHD

Vaping Ordinance Adopted

On August 18, the Kittitas County Board of Health and the Kittitas County Board of County Commissioners adopted an ordinance to prohibit the use of electronic vaping devices in public places. Initially, the Board of Health discussed how to approach a ban on vaping in public places, but did not want to ban the use in vaping stores that were for vaping only. However, on June 28, Washington State passed a state-wide regulation on vapor products and in order to ensure compliance with the state law, KCPHD made some changes to the local ordinance prior to holding a public hearing to consider the changes. The new ordinance makes vaping in public as illegal as smoking in public places.



Pertussis Confirmed in Ellensburg Schools

KCPHD was notified of two students who were diagnosed with pertussis, more commonly called whooping cough, in two different Ellensburg schools. One student attended the high school and the other student attended the Ellensburg Developmental Preschool. As a result, KCPHD investigated any potential exposures and confirmed to other cases were linked to the original students who were diagnosed. KCPHD worked closely with the schools in order to prevent any further exposures.



KCPHD Responds to High Count of Algae Toxin

KCPHD partnered with the Washington State Department of Fish and Wildlife (WDFW) and the Washington State Department of Ecology (Ecology) to respond to blue-green algae in Fiorito Lake in Ellensburg. KCPHD was notified on July 21 of higher than acceptable levels of toxin, which resulted in the closure of the lake. High levels of toxins can occur with warm temperatures, sunlight, and nutrient rich waters. When levels are higher than acceptable, they may cause illness, and even death, to humans, pets, waterfowl, and other animals. KCPHD sent out messaging to the public to avoid Fiorito Lake during the closure.

2016 Year in Review: Top Stories for KCPHD

Kittitas County Commissioners Approve Admissions Tax



The Kittitas County Board of Commissioners approved a new five percent admissions tax on January 19, which helps fund KCPHD. The admissions tax applies to areas outside of the cities of Roslyn and Ellensburg and includes activities for admission such as golf, concerts, festivals, sporting events, etc. The tax was approved with a resolution to provide the first \$100,000 to fund KCPHD. The tax is in response to KCPHD having funding issues for years. Between 2009 and 2012, KCPHD’s budget decreased from \$1,634,310 to \$1,049,147 which affects operations and programs.

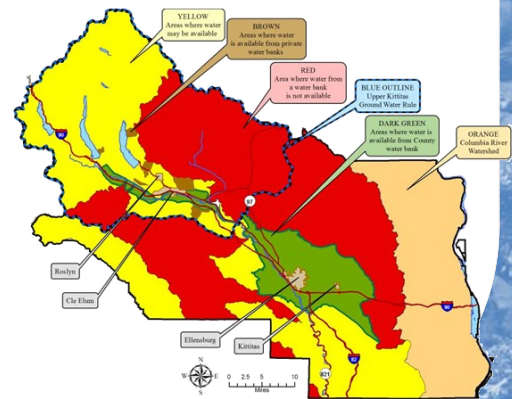
KCPHD Raises Awareness of Overdose Prevention

On August 31, KCPHD co-hosted an event with the Kittitas County Community Network and others to honor International Overdose Awareness Day. The event occurred at the United Methodist Church in Ellensburg. The United Methodist Church is also where KCPHD operates the Never Share Syringe Exchange, since 2008. The event was aimed at helping resolve the stigma surrounding drug-related deaths. In addition to the event and the syringe exchange, KCPHD also provides overdose prevention education and naloxone training.



Kittitas County Water Bank Implemented

In 2016, the water banking program was in full implementation and early in the year, the Kittitas County Commissioners approved a \$2.7 million water purchase. As a result of the settlement agreement in 2014, Kittitas County is required to have mitigation for all current or new ground water uses. In response, KCPHD provides mitigation to customers who are looking for a building permit. Our process is the first of its kind in Washington State and has been held as an example for other counties who may be facing the same regulations.



KCPHD Annual Program Data

Department Wide	2014	2015	2016
New Grants and Fund Sources	3	5	1
Active Volunteers	7	5	5
Health Data Requests	14	17	18
Quality Improvement Projects	0	3	0
Media Contacts	112	122	109
Health Care Provider Releases	29	10	17
Community Engagements	713	535	483
Updates to Codes and Policies	7	10	8

Vital Records	2014	2015	2016
Births			
Births Registered	335	311	312
Birth Certificates Issued	903	1012	1112
Deaths			
Deaths Registered	197	255	239
Death Certificates Issued	1013	1076	1231

Immunizations	2014	2015	2016
Total Vaccinations Given	1524	1045	828
Flu Vaccinations Given	638	350	349
Specialty Travel Vaccinations	30	29	52
Adults Receiving Vaccinations	760	517	391
Children Receiving Vaccinations	406	285	251
Travel Consultations	47	39	40

KCPHD Annual Program Data

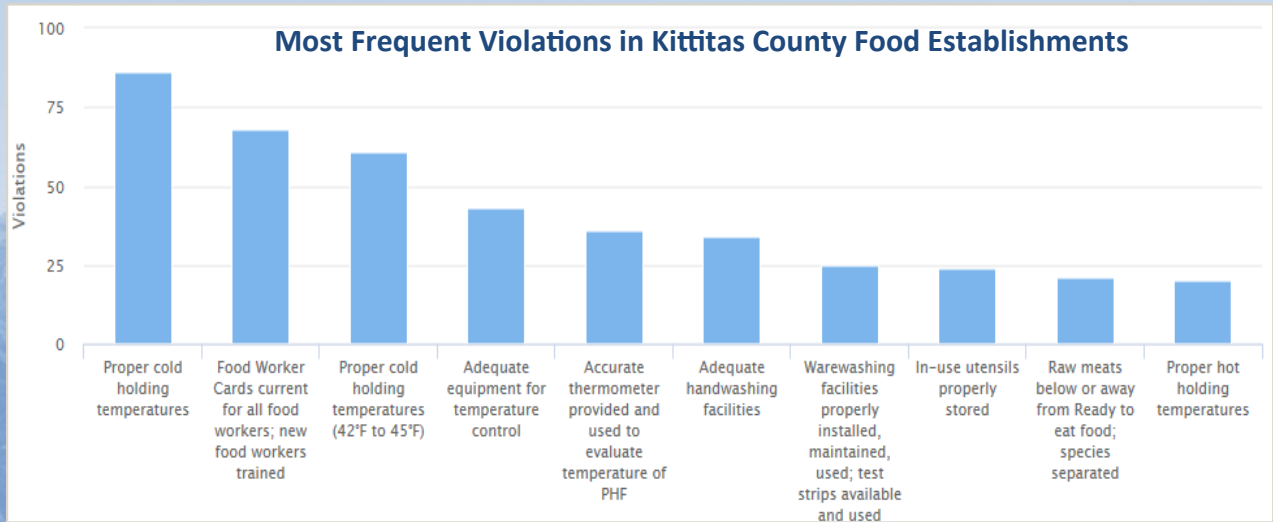
Communicable Disease (CD) & Tuberculosis (TB)	2014	2015	2016
<i>Investigations</i>			
TB Investigations	1	1	1
CD Investigations	139	270	153
<i>Cases</i>			
Confirmed CD Cases	69	53	57
Sexually Transmitted Diseases Reported	204	233	240
<i>Testing</i>			
TB Tests Administered	107	143	102

HIV /AIDS & Hepatitis C	2014	2015	2016
<i>Testing</i>			
HIV Tests	15	5	8
Hepatitis C Tests	9	13	8
<i>Syringe Exchange</i>			
Syringe Exchange Participants (duplicated)	103	118	911
Syringes Exchanged	1928	9382	15551
Naloxone Kits Distributed	n/a	17	34
<i>Education</i>			
HIV and Hepatitis C Education Participants	371	210	246

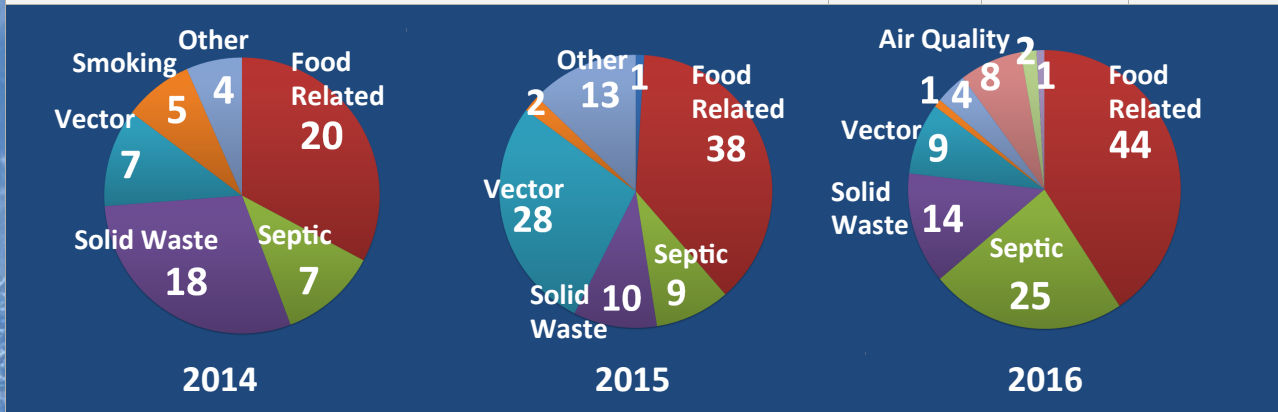
Access to Baby & Child Dentistry	2014	2015	2016
Outreach contacts made	376	466	196
Referrals to Dentists	18	13	3

KCPHD Annual Program Data

Food Safety	2014	2015	2016
Permits			
Permanent Food Establishment Applications	288	338	301
Temporary Food Establishment Applications	61	88	84
Food Handler Permits	2555	3056	2982
Inspections			
Permanent Food Establishment Inspections	373	585	613
Temporary Food Establishment Inspections	96	171	74



Environmental Health Complaints	2014	2015	2016
All Complaint Types	61	101	108



KCPHD Annual Program Data

Solid Waste	2014	2015	2016
Permits Issued	9	8	9
Inspections	30	31	34
On-site Sewage	2014	2015	2016
Permits Issued	187	238	145
Finalized Permits	126	163	178
Site Evaluations	177	232	222
Inspections	134	164	158
Drinking Water	2014	2015	2016
Group A Water System Sanitary Surveys	15	9	10
Individual Well Site Application Reviews	58	104	56
Adequate Water Supply Determination Applications	317	374	239
Well Delegation Inspections	21	34	27
Water Mitigation Certificates	31	108	23
Living Environment	2014	2015	2016
<i>Schools & Playgrounds</i>			
Inspections	29	27	23
<i>Public Pools & Spas</i>			
Permits Issued	34	16	30
Inspections	30	50	59
<i>Camps & Parks</i>			
Permits Issued	16	13	13
Inspections	17	13	14
Land Use	2014	2015	2016
Plat Applications	6	10	7
Soil Logs	2	6	2



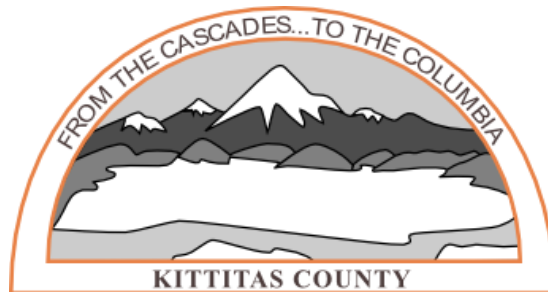
507 N . Nanum Street, Suite 102

Ellensburg, WA 98926

Phone: 509.962.7515

Fax: 509.962.7581

www.co.kittitas.wa.us/health



Copies of this report are available on our website:

www.co.kittitas.wa.us/health/reports